

SageTea Browser

Quick Start Guide



SageTea Browser Quick Start Guide

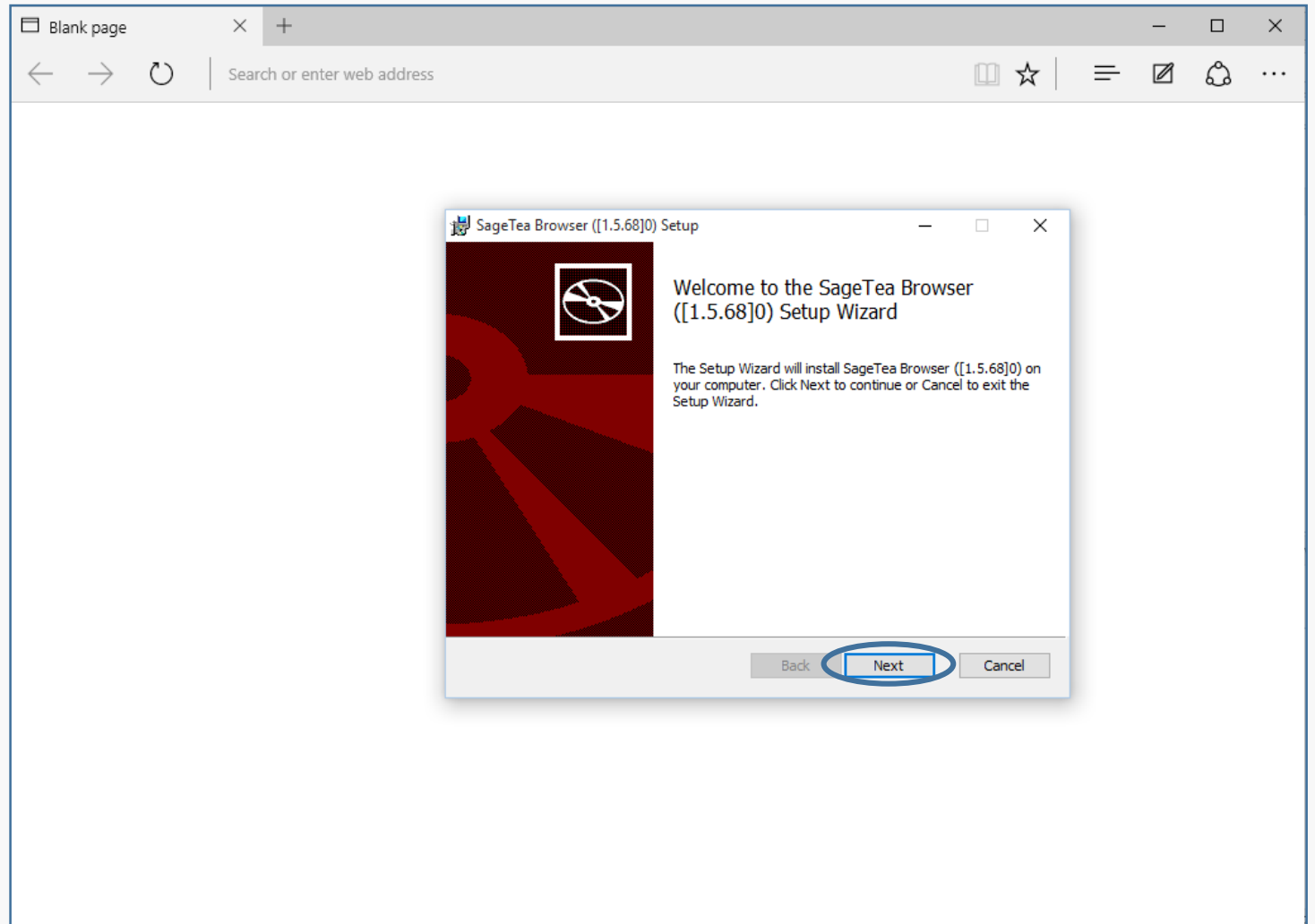
SageTea Software applications can now be accessed from the “cloud” via SageTea’s proprietary **SageTea Browser**.

To download the **Browser**, click on the link provided in the email this was sent in.

Please click through any prompts that come up because of your computer’s firewall or operating software.

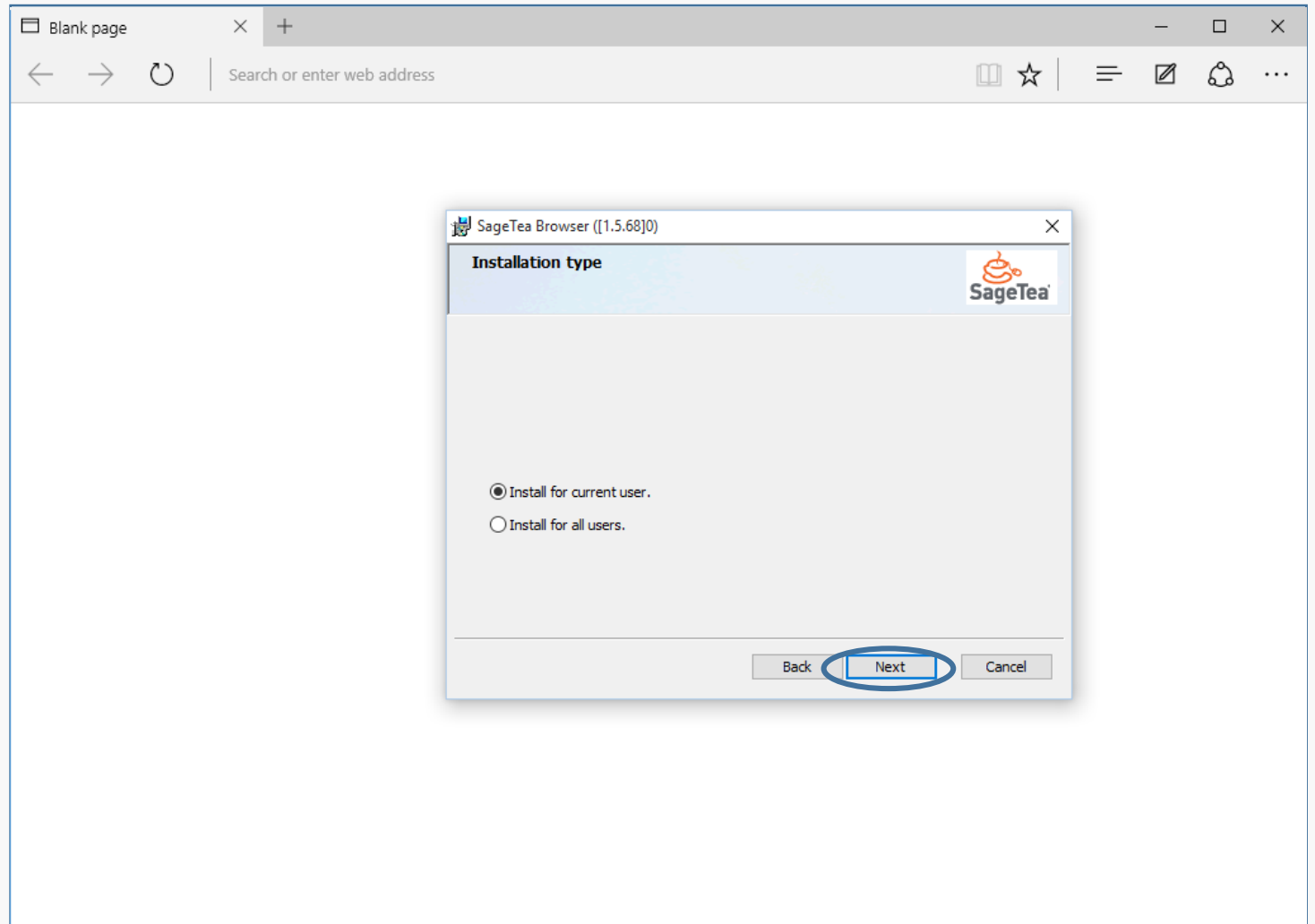
SageTea Browser Quick Start Guide

Download Screen 1



SageTea Browser Quick Start Guide

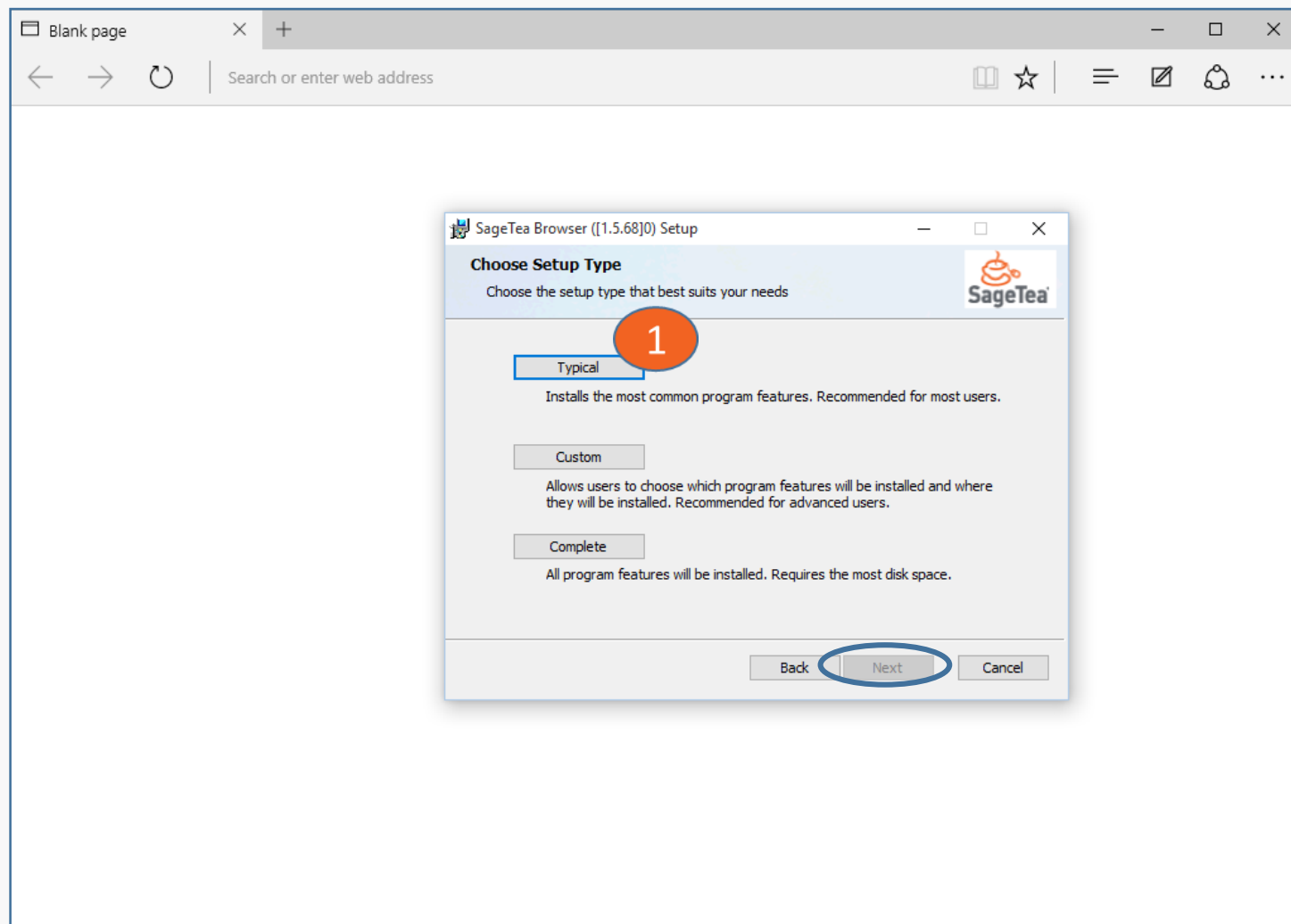
Download Screen 2



SageTea Browser Quick Start Guide

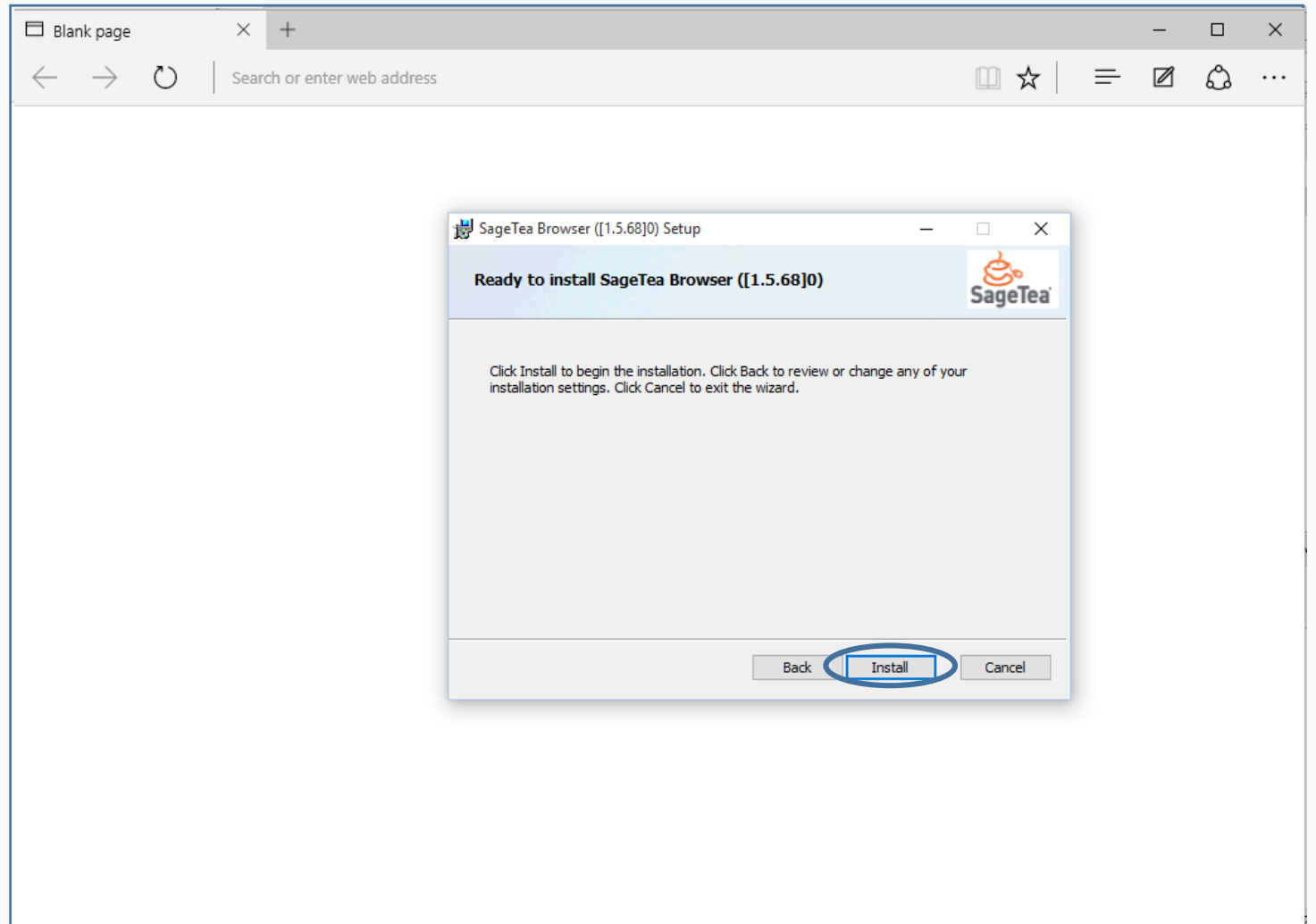
Download Screen 3

1 Click on “Typical”



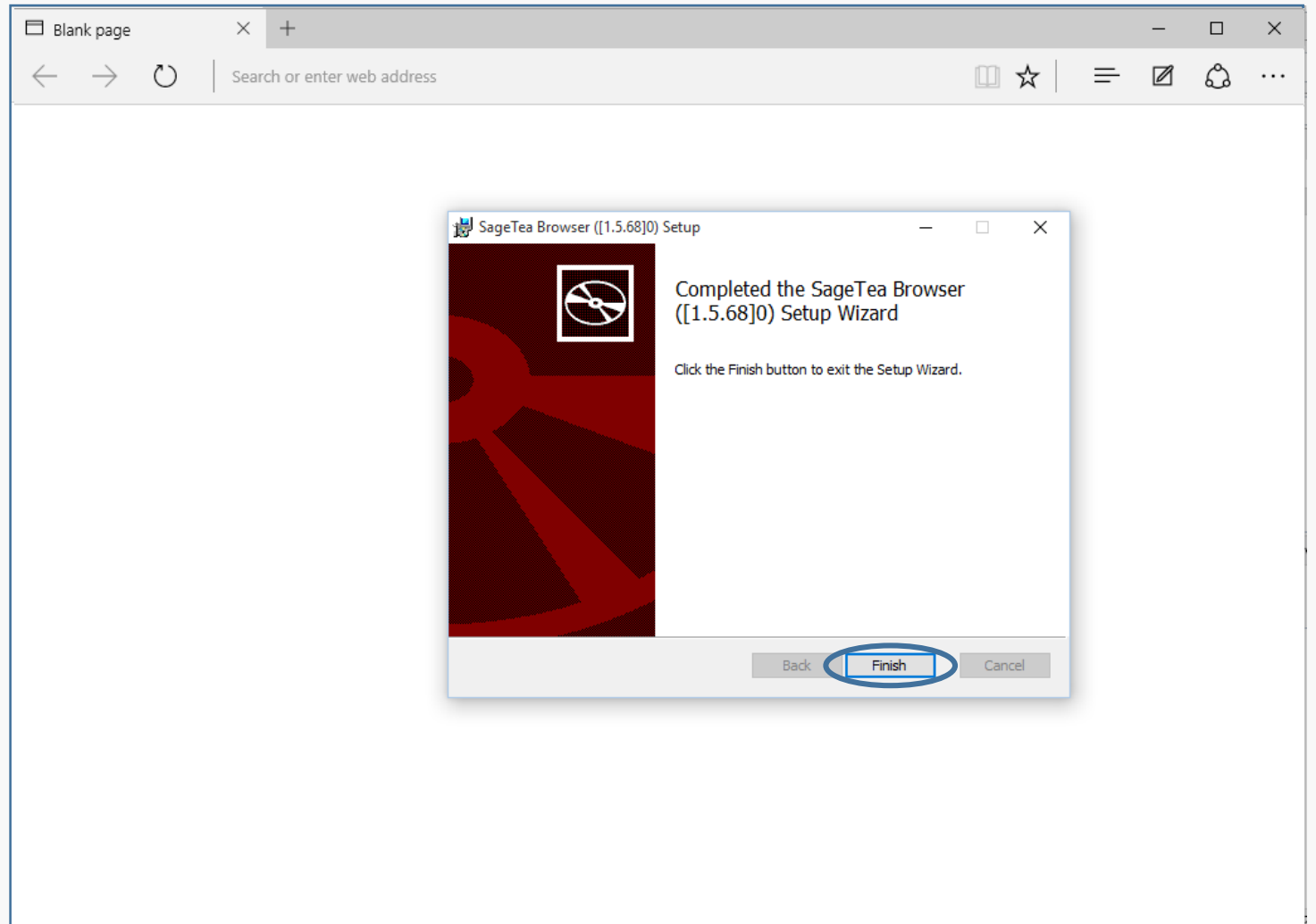
SageTea Browser Quick Start Guide

Download Screen 4



SageTea Browser Quick Start Guide

Download Screen 5



SageTea Browser Quick Start Guide

Go to your computer downloads folder or search function to find the downloaded “SageTea Browser” and open it.

Follow the steps listed in the following installation screens.

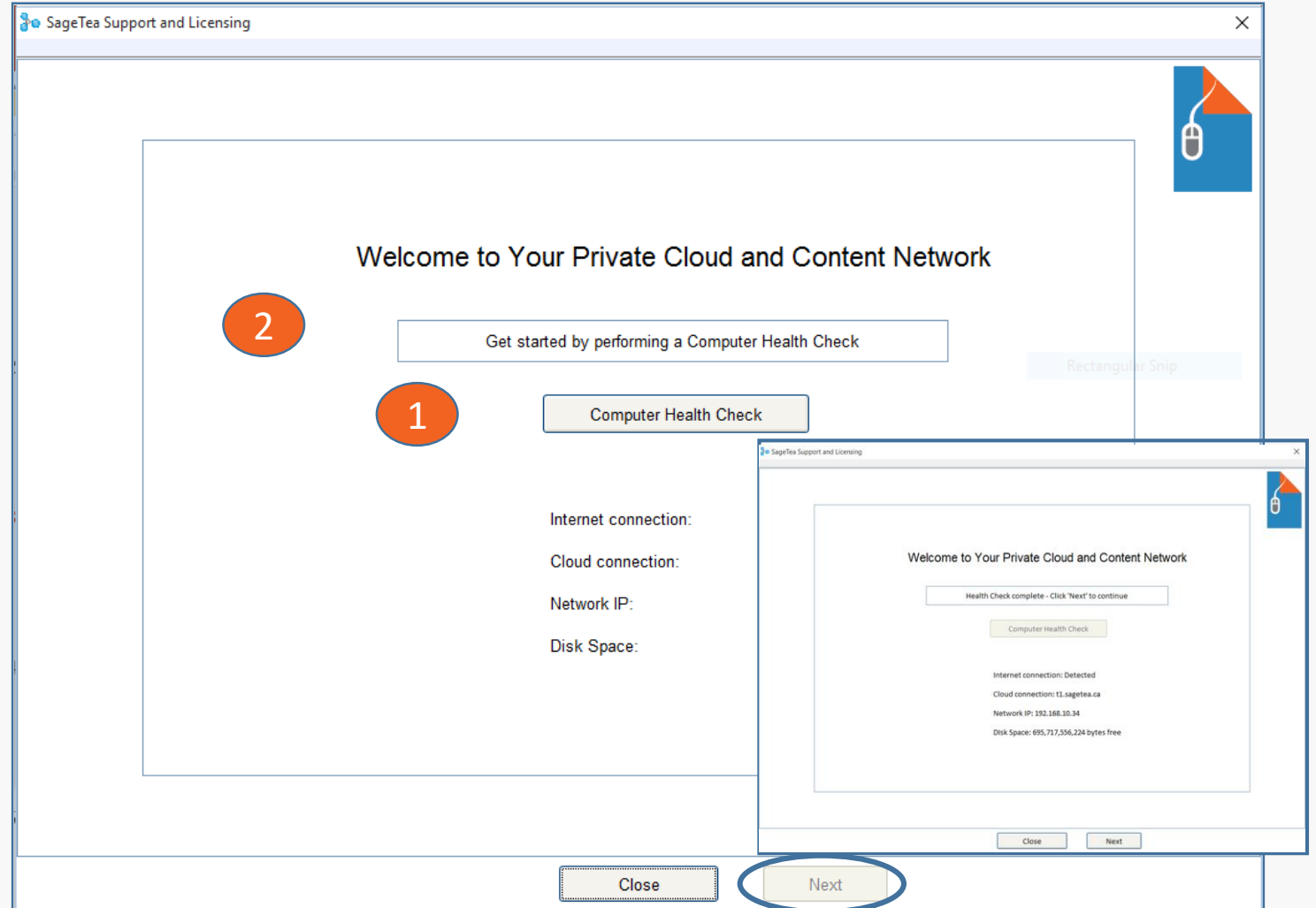
On installation screen 3 are entry fields. You will have been issued a User Name, Password, Cloud Server location and Cloud Number for your application to enter here.

The Cloud number is your unique access number. If you share this number with someone else then their entries will be entered in your application.

SageTea Browser Quick Start Guide

Installation Screen 1

- 1 Click here to check that your computer is able to run the software
- 2 Confirmation that computer check complete
- 3 Results of the computer check



SageTea Browser Quick Start Guide

Installation Screen 2

- 1 Accounts have been set up for you, so click “Have Account”

SageTea Support and Licensing

Create Your Account

Account Name:

SageTea Browser Quick Start Guide

Installation Screen 3

- 1 Check “I have a private server”
- 2 Enter your Account Name
- 3 Enter your Password
- 4 Enter the Cloud Server location
- 5 Enter your application’s Cloud Number

The screenshot shows the 'SageTea Support and Licensing' window. It contains the following elements:

- Two checkboxes: I am hosted by SageTea (with callout 2) and I have a private server (with callout 1).
- Input fields: User Name (with callout 2), Password (with callout 3), My Cloud Server (with callout 4), and My Cloud Number (with callout 5).
- A 'Connect To Cloud' button (with callout 5).
- A section for license keys: 'Enter your License Key' with an input field and an 'Accept License Key' button.
- Navigation buttons: 'Previous' and 'Close' at the bottom.

NOTE: enter the information in this sequence ONLY – even if the information is already there from a previous installation, please re-enter it again in this sequence. The passwords are also case sensitive.

SageTea Browser

For assistance,
please contact 1 877 722-2091 or
support@sageteasoftware.com

